





TABLE OF CONTENTS

- About Us..... p3
- Quick Facts..... p5
- Transit & Lodging..... p7
- The Neighborhood..... p9
- Floor Plan..... p11
- Main Space..... p13
- Additional Space..... p15
- Second Floor..... p17
- Lobby & Restrooms..... p19
- Outdoor Space..... p21
- Past Events..... p23
- Sister Venue..... p25



ABOUT US

The Brooklyn EXPO Center is located in the thriving neighborhood of Greenpoint, Brooklyn—a new concept for a historical neighborhood that is now emerging as a frontier of culture in the Brooklyn scene. The Brooklyn EXPO Center is a unique physical structure with excellent access to New York City and multiple hubs of

transportation including both NYC Airports. The property boasts a beautiful glass exterior and a large open floor plan that can be used in whole or can be divided to create multiple rooms or for smaller functions. This allows for unlimited flexibility; add in high ceiling, a loading dock, cafeteria space, office space, parking and on-site storage for

pre-event shipping, Brooklyn EXPO expects to cater to a wide array of clients.

The Brooklyn EXPO is able to handle large scale productions of public events, private events, conferences, company meetings, conventions, product launches, receptions, multi-media events and banquets.

“A bright and spacious venue”

—Digital Journal

QUICK FACTS

Usable Space 68,000 sq ft

Main Hall 28,000 sq ft

Ceiling Height 24 ft high

Frontage 8,000 sq ft floor-to-ceiling glass

Additional Space 11 break-out rooms & on-site offices totaling 10,000 sq ft space

Loading Load-in zone directly in main hall

Parking 30,000 sq ft lot can fit 100+ cars

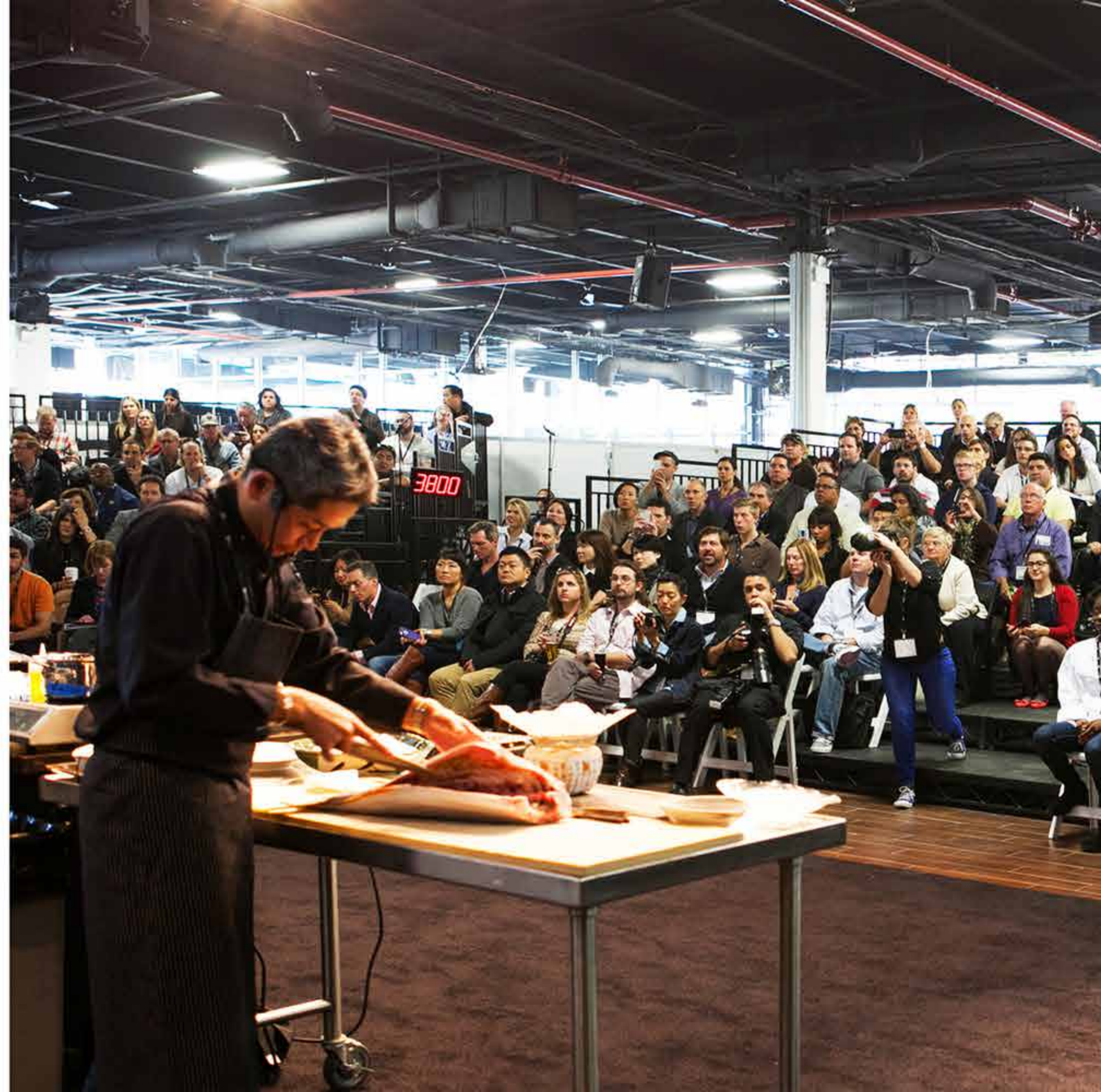
Internet Access GTT internet is a required internet provider, with built-in infrastructure running through out the venue site

ATM Located conveniently in the lobby

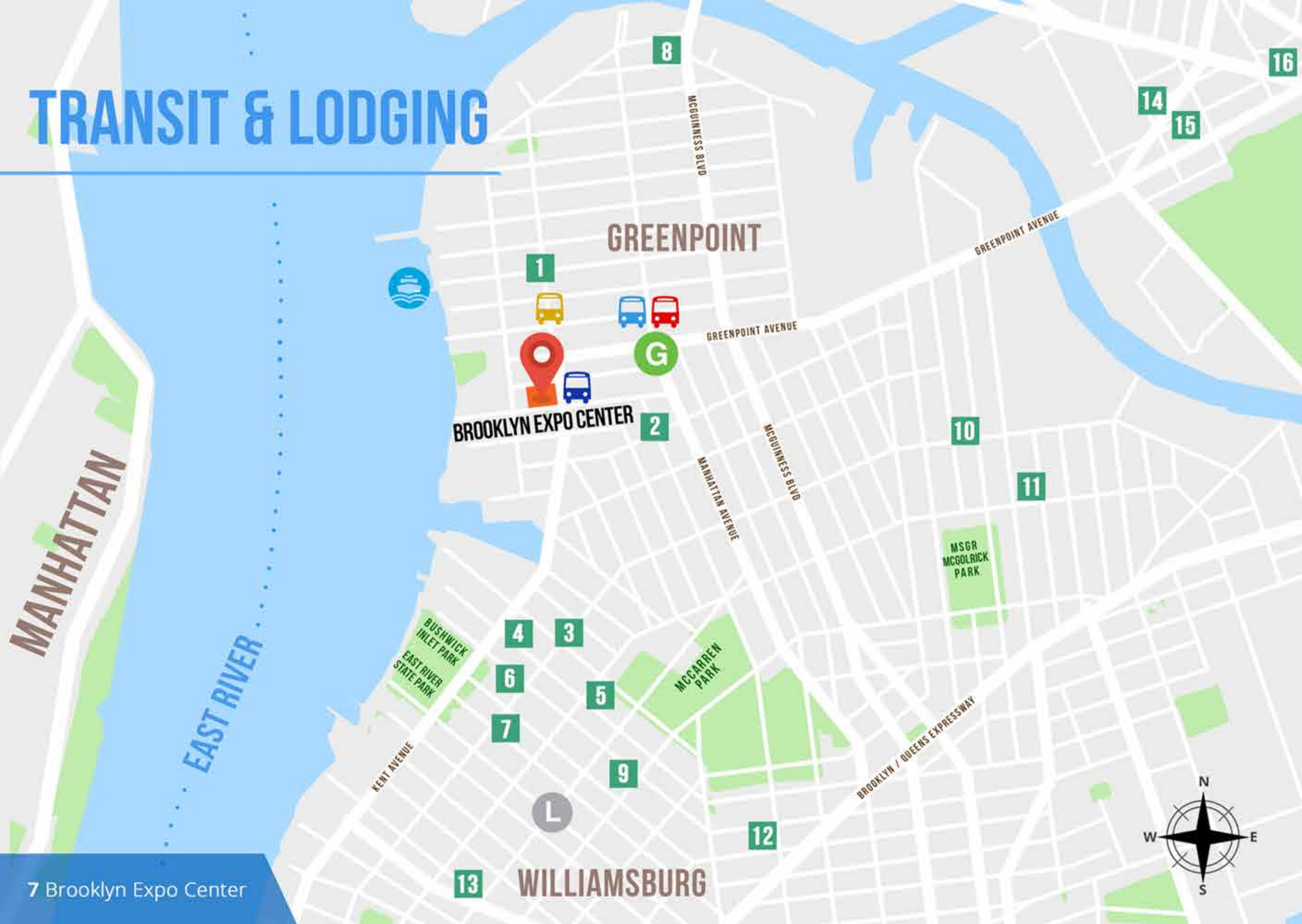
Media Displays Televisions located in lobby & main hall for venue use

Convenient Location Bus, train & ferry within 10-minute walk

Capacity 2,000 Standing | 1,400 Seated



TRANSIT & LODGING



TRAINS

- G - Greenpoint Ave** 0.3 mile
- L - Bedford Ave** 0.9 mile

FERRY

- East River Ferry** 0.4 mile

BUSSES

- B32 - Franklin St / Noble St** 225 ft
- B24 - Greenpoint Ave / Franklin St** 0.1 mile
- B43 - Manhattan Ave / Calyer St** 0.3 mile
- B62 - Manhattan Ave / Calyer St** 0.3 mile

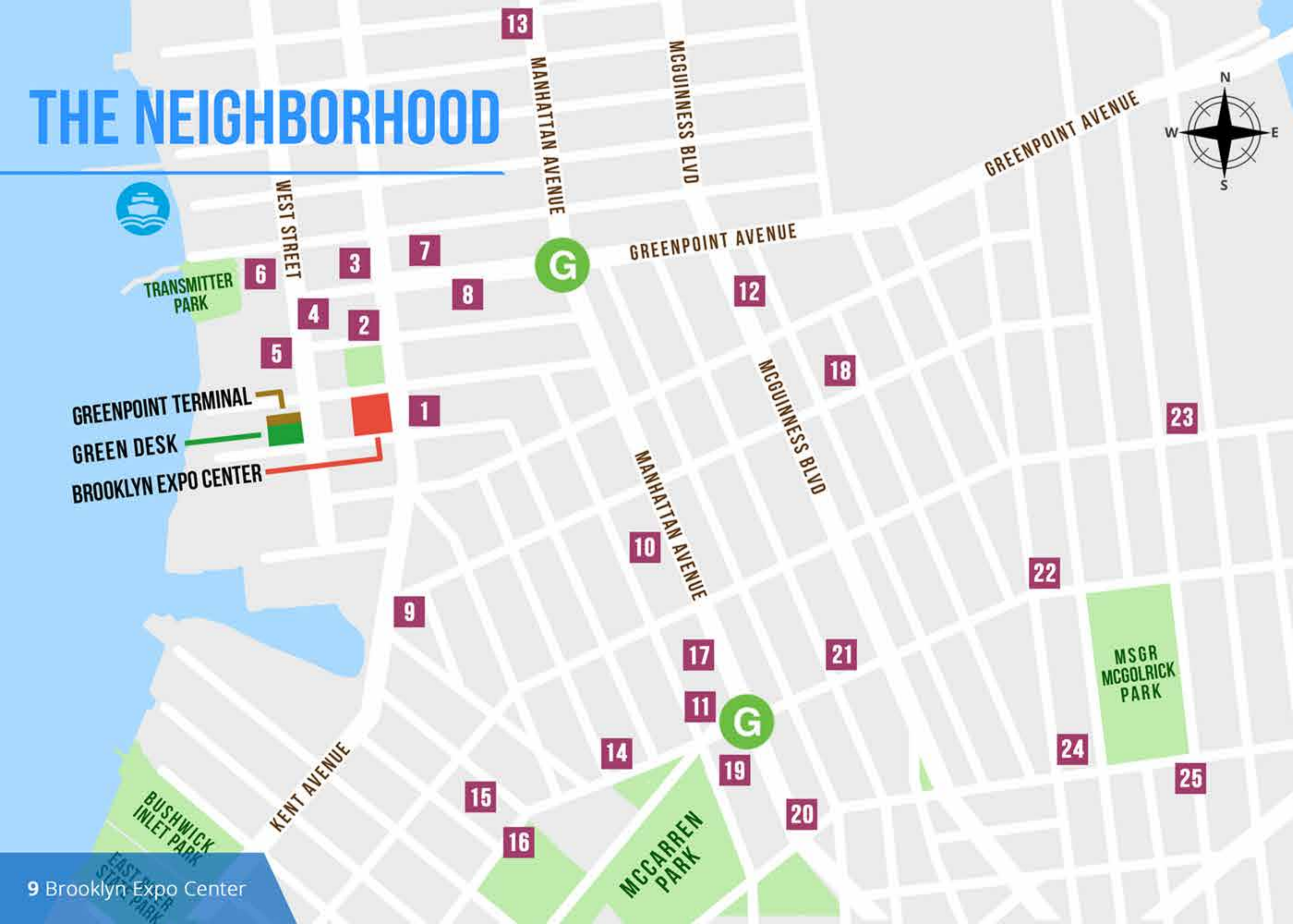
Citi Bike

- Milton St & Franklin St** 394 ft

HOSPITALITY

- 1 Franklin Guest House** 0.3 mile
- 2 Greenpoint Lodge** 0.5 mile
- 3 The William Vale** 0.5 miles
- 4 Wythe Hotel** 0.5 mile
- 5 Mccarren Hotel and Pool** 0.6 mile
- 6 Williamsburg Hotel** 0.6 mile
- 7 The Hoxon: Williamsburg** 0.6 mile
- 8 The BoxHouse Hotel** 0.9 mile
- 9 The Driggs Williamsburg** 0.9 mile
- 10 The Henry Norman Hotel** 0.9 mile
- 11 Habitat 101 Brooklyn** 1.1 miles
- 12 Hotel Le Jolie** 1.1 miles
- 13 Pod Brooklyn Hotel** 1.2 miles
- 14 Fairfield Inn by Marriott** 1.4 miles
- 15 City View Inn** 1.4 miles
- 16 Best Western** 1.8 miles

THE NEIGHBORHOOD



DINING

- 1 **Le Gamin** 207 ft
- 2 **Broken Land** 0.1 mile
- 3 **Ramona** 0.1 mile
- 4 **Paulie Gee's** 0.2 mile
- 5 **Brooklyn Barge** 0.1 mile
- 6 **Ovenly** 0.2 mile
- 7 **Black Rabbit** 0.2 mile
- 8 **Budin** 0.2 mile
- 9 **Northern Territory** 0.2 mile
- 10 **Peter Pan Donut & Pastry Shop** 0.4 mile
- 11 **Five Leaves** 0.5 mile
- 12 **Taco Bell** 0.5 mile
- 13 **Troost** 0.5 mile
- 14 **Spritzenhaus33** 0.5 mile
- 15 **The Gutter** 0.5 mile
- 16 **Berry Park** 0.5 mile
- 17 **Calexico** 0.6 mile
- 18 **Cafe Grumpy - Greenpoint** 0.6 mile
- 19 **TØRST** 0.6 mile
- 20 **Enid's** 0.7 mile
- 21 **Amber Steakhouse** 0.7 mile
- 22 **Goldie's Bar** 0.9 mile
- 23 **The Place Bar & Lounge** 1.0 mile
- 24 **Selamat Pagi** 1.0 mile
- 25 **Little Dokebi** 1.1 miles

DAILY GRIND

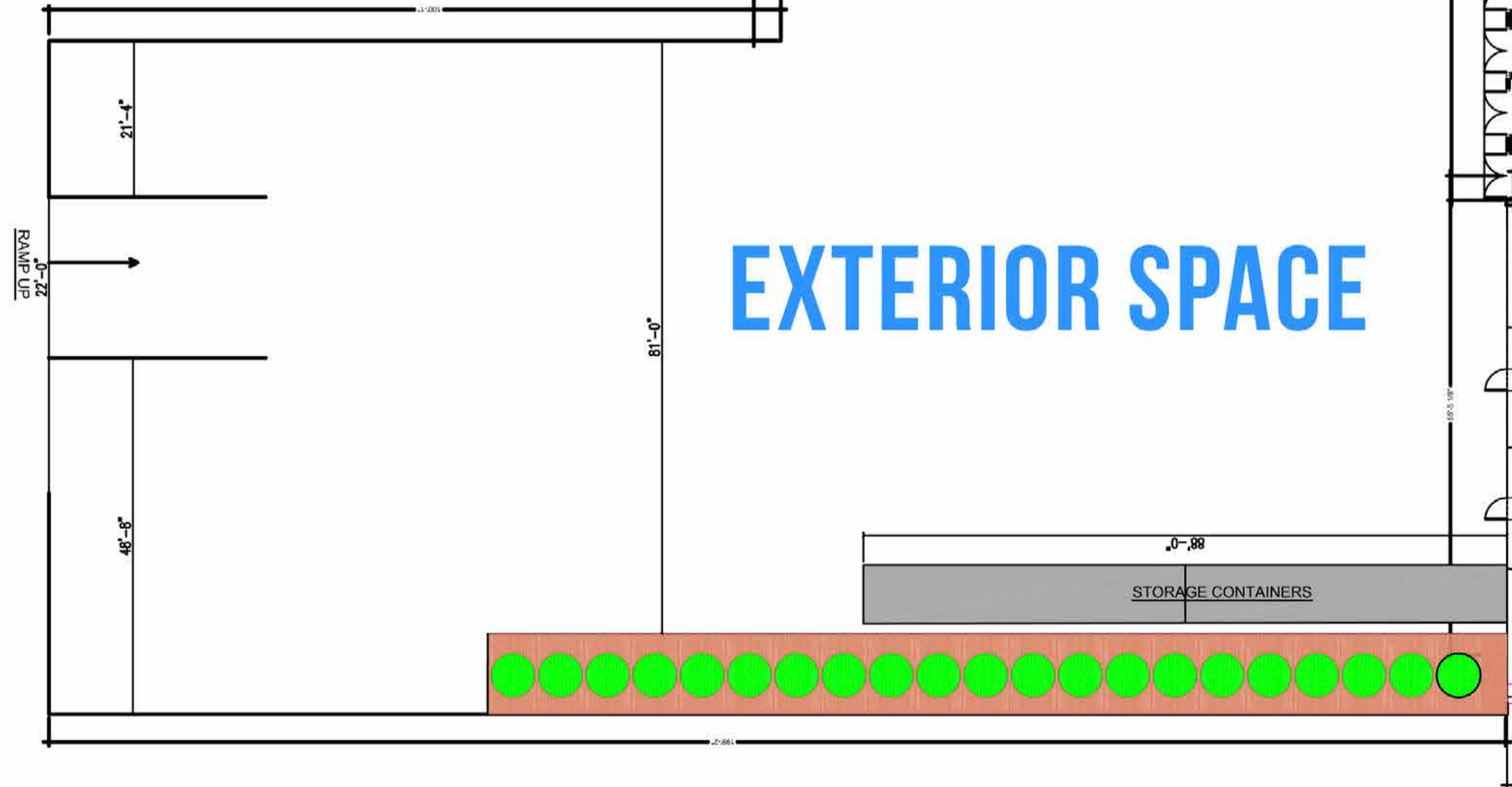
green desk coworking spaces Discounted daily/weekly rentals with your EXPO Rental

SISTER VENUE

Greenpoint Terminal Warehouse Discounted rates available. See p26 for details.

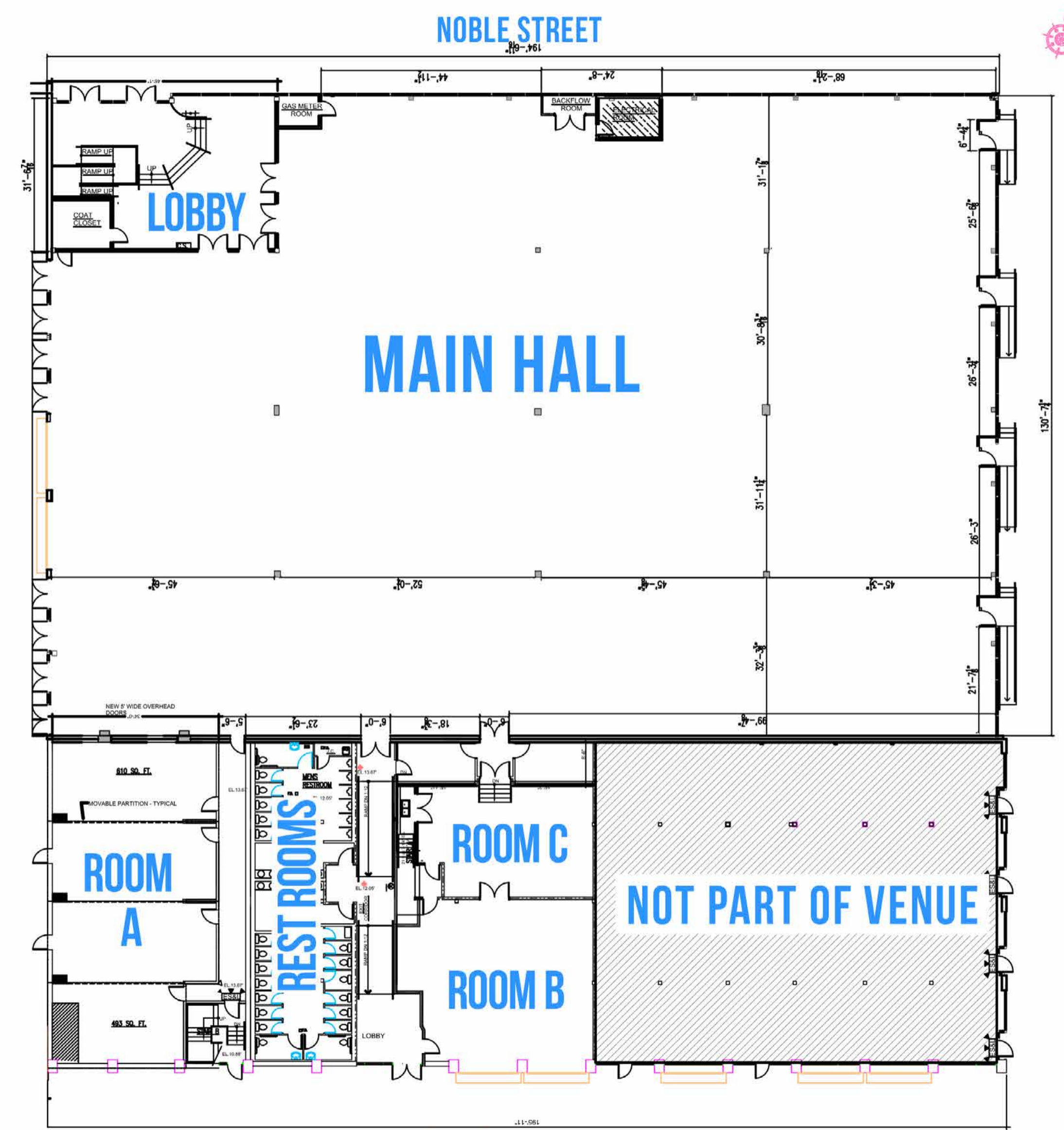
FLOOR PLANS

WEST STREET



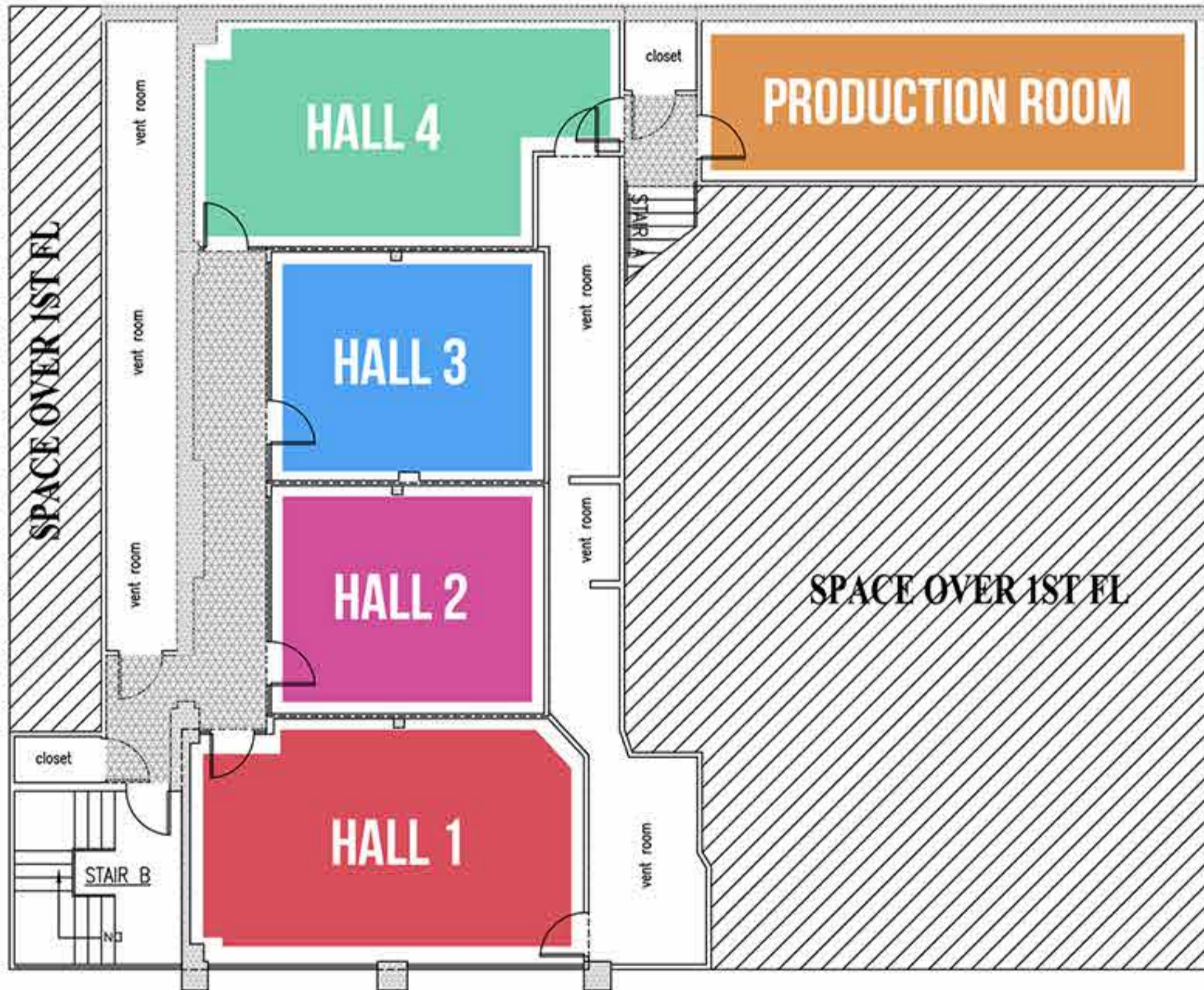
OAK STREET

NOBLE STREET



OAK STREET

2ND FLOOR



Specs

TOTAL SPACE

- HALL 1 478 SQ FT
- HALL 2 311 SQ FT
- HALL 3 312 SQ FT
- HALL 4 475 SQ FT
- PRODUCTION ROOM 435 SQ FT

FLOOR DIMENSIONS

- HALL 1 26' x 17'
- HALL 2 18' x 16'
- HALL 3 18' x 16'
- HALL 4 16' x 30'
- PRODUCTION ROOM 35' x 11'

CEILING HEIGHT

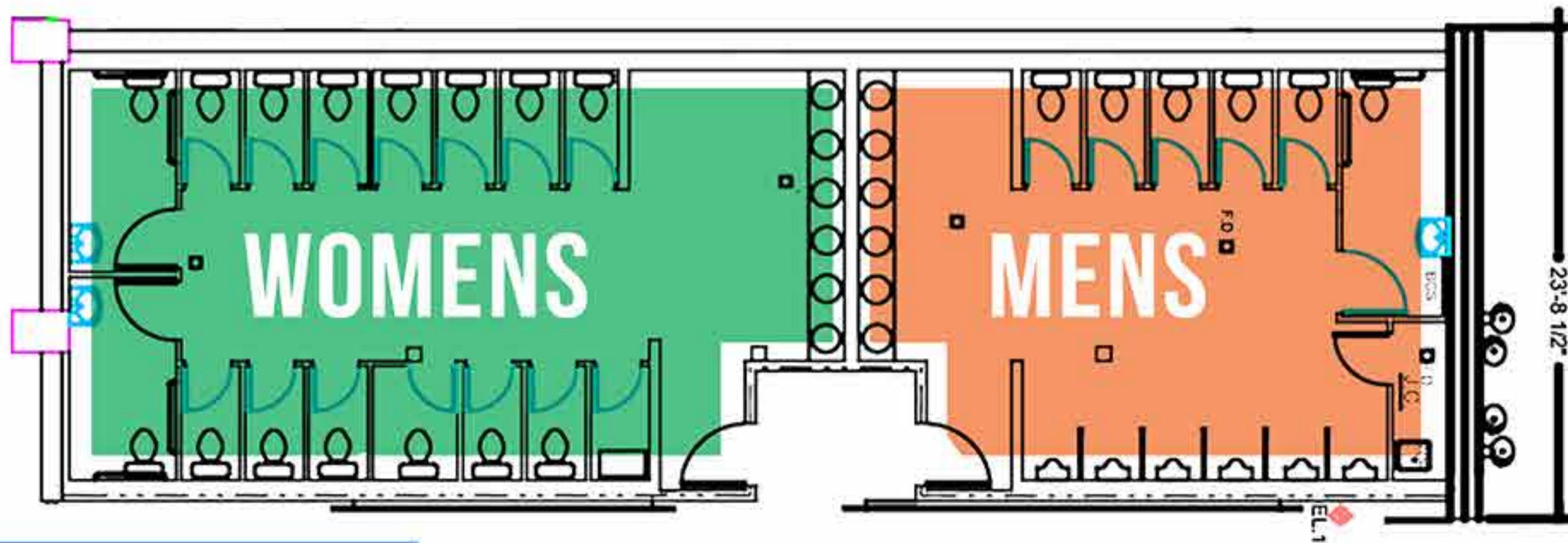
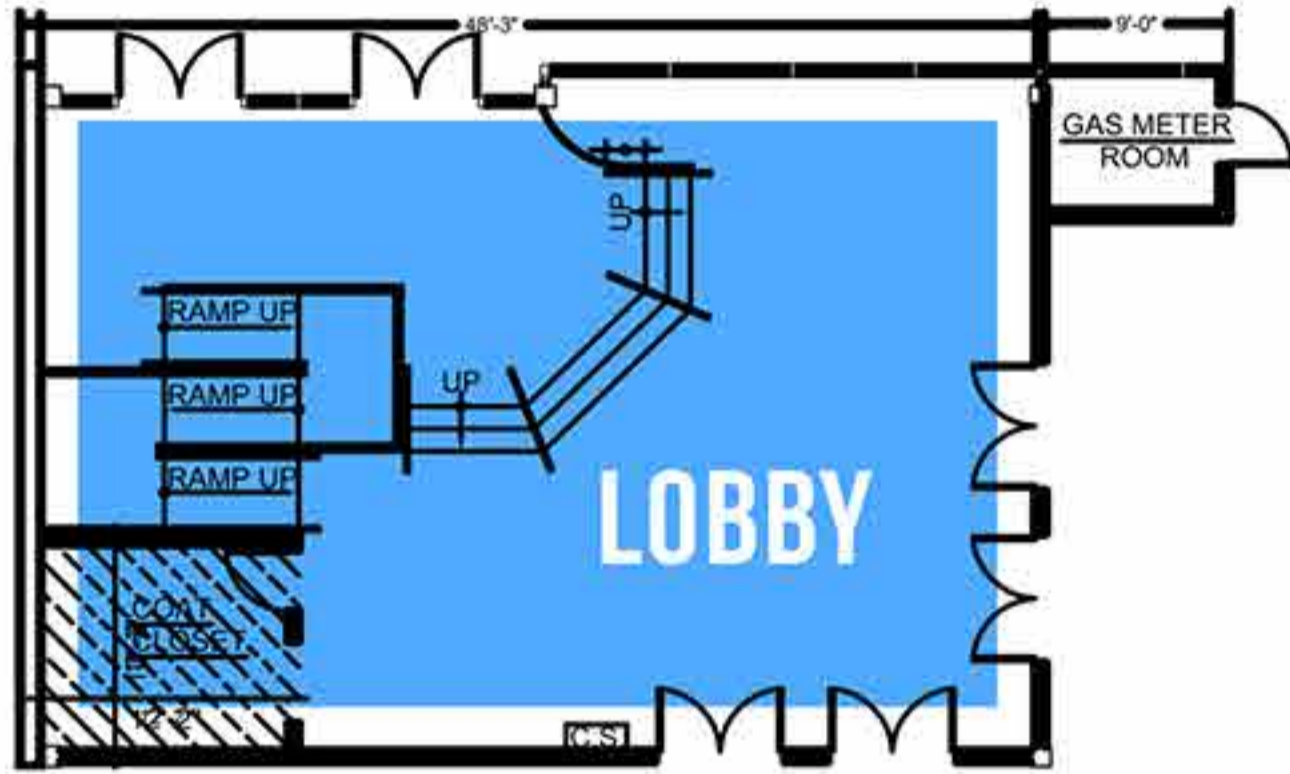
9' high

OCCUPANCY FOR PRESENTATION

- HALL 1 30 PEOPLE
- HALL 2 20 PEOPLE
- HALL 3 20 PEOPLE
- HALL 4 30 PEOPLE



LOBBY & RESTROOMS



Specs

LOBBY

TOTAL SPACE 1,500 SQ FT
DIMENSIONS 48' 3" x 30' 11"
CEILING HEIGHT 24' high

MENS RESTROOM

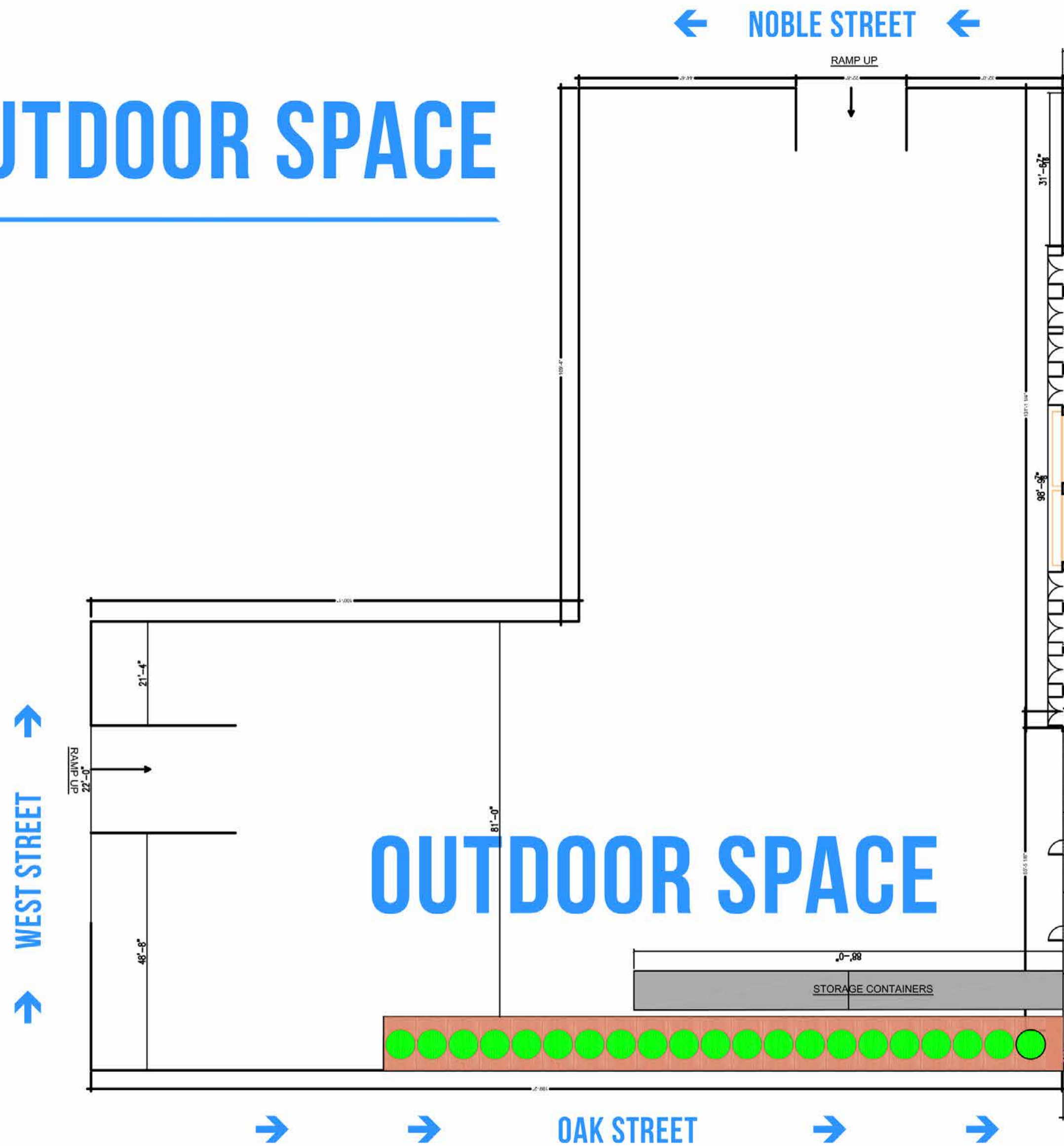
OCCUPANCY 6 Stalls | 6 Urinals
1 ADA accessible stall

WOMENS RESTROOM

OCCUPANCY 15 Stalls
2 ADA accessible stalls



OUTDOOR SPACE



Specs

TOTAL SPACE

30,000 SQ FT

DIMENSIONS

199' x 197'

OCCUPANCY

DEPENDANT UPON EVENT SPECS

STREET ACCESS

NOBLE STREET 22' ENTRANCE
WEST STREET 23' ENTRANCE

ACCESS FROM EXPO

8 DOORWAYS FROM MAIN HALL
 2 DOORWAYS FROM ROOM A





Hot Sauce Expo, 2015

PAST EVENTS

NAME OF EVENT	DATE	ATTENDEES	NAME OF EVENT	DATE	ATTENDEES
<i>Coffee & Tea Festival</i>	MAR 2017	3,000	<i>Book and Print Fair</i>	SEP 2017	3,000
<i>Fashion Week: Brooklyn</i>	APR 2017	1,000	<i>Worlds Fair NANO</i>	SEP 2017	5,000
<i>Brooklyn Wine Fest</i>	APR 2017	1,500	<i>Sex Expo</i>	SEP 2017	4,000
<i>NYC Hot Sauce Expo</i>	APR 2017	5,000	<i>Fear the Riff</i>	OCT 2017	750
<i>Brooklyn Design</i>	MAY 2017	3,000	<i>Brainfood NYC</i>	OCT 2017	2,500
<i>Tokyo x Brooklyn</i>	MAY 2017	1,500	<i>Brooklyn Wine Fest</i>	OCT 2017	1,500
<i>The Other Art Fair</i>	JUN 2017	5,000	<i>Asian Ultra</i>	OCT 2017	1,000
<i>Pour the Core</i>	JUN 2017	2,000	<i>The Other Art Fair</i>	NOV 2017	5,000
<i>Coffee & Tea Festival: Iced</i>	JUN 2017	1,500	<i>Wine Riot</i>	DEC 2017	2,500
<i>Renegade Craft Fair</i>	JUN 2017	2,500	<i>Bust Craftacular Holiday</i>	DEC 2017	4,000
<i>SpinExpo</i>	JUL 2017	4,000			
<i>NYC Food Waste Fair</i>	JUL 2017	2,500			

■ MULTI-DAY EVENT ■ REPEAT EVENT

Tokyo Brooklyn

BUST
CRAFTACULAR

RENEGADE CRAFT FAIR

BROOKLYN
ANTIQUARIAN
BOOK FAIR

BOROUGH
CON

POUR THE CORE
A HARD CIDER FESTIVAL

WINE RIOT SPINEXPO

COFFEE & TEA FESTIVAL NYC
MAC & CHEESE SMACKDOWN
NEW YORK 2018

VAPEVENT

PRESENTED BY clutter

FIVE POINTS FESTIVAL
DESIGNER TOYS + COMICS + STREET ART + BEER + NYC

BRAINFOOD DEVELOPERWEEK
TOTALITY fw BK FASHION WEEK BROOKLYN

WORLDS FAIR
NANO

TACO TAKEOVER
A CANNONBALL PRODUCTION

SEX EXPO

THE OTHER ART FAIR

CIE TOUR
CAREERS IN ENTERTAINMENT

THE 6TH ANNUAL
NYC HOT SAUCE EXPO

BrunchCon
Brooklyn WINE FEST

nyc food waste fair



GREENPOINT
TERMINAL WAREHOUSE

SISTER VENUE



Total Space 9,000 sq ft, column-free space
Capacity 800 Seated | 1,100 Standing

Ceiling Height 40 ft high, sky-lit ceiling
Loading Drive-in access points

Built in the 1890's, this Brooklyn landmark played a huge role in the American Industrial Revolution. Once a rope factory producing twine and oakum for the shipyards along the East River, it was also the birthplace of the famous wartime ship, the USS Monitor. The Greenpoint Terminal Warehouse boasts the original brick and wood of the era and the building facade remains untouched from the 1890s. This raw and versatile landmark was recently restored with close attention paid to the details of the past and is now a prime addition to your Brooklyn EXPO Center event. Those who wish to utilize the Greenpoint Terminal Warehouse space in addition to their Brooklyn EXPO rental will receive discounted rates.

For more information on this BK Venue visit greenpointterminalwarehouse.com

BK
VENUES